

ÅRE ÖSTERSUND

VOR RWY 12

INSTRUMENT APPROACH CHART – ICAO

THR ELEV 1194.3 ft, AD ELEV 1233 ft

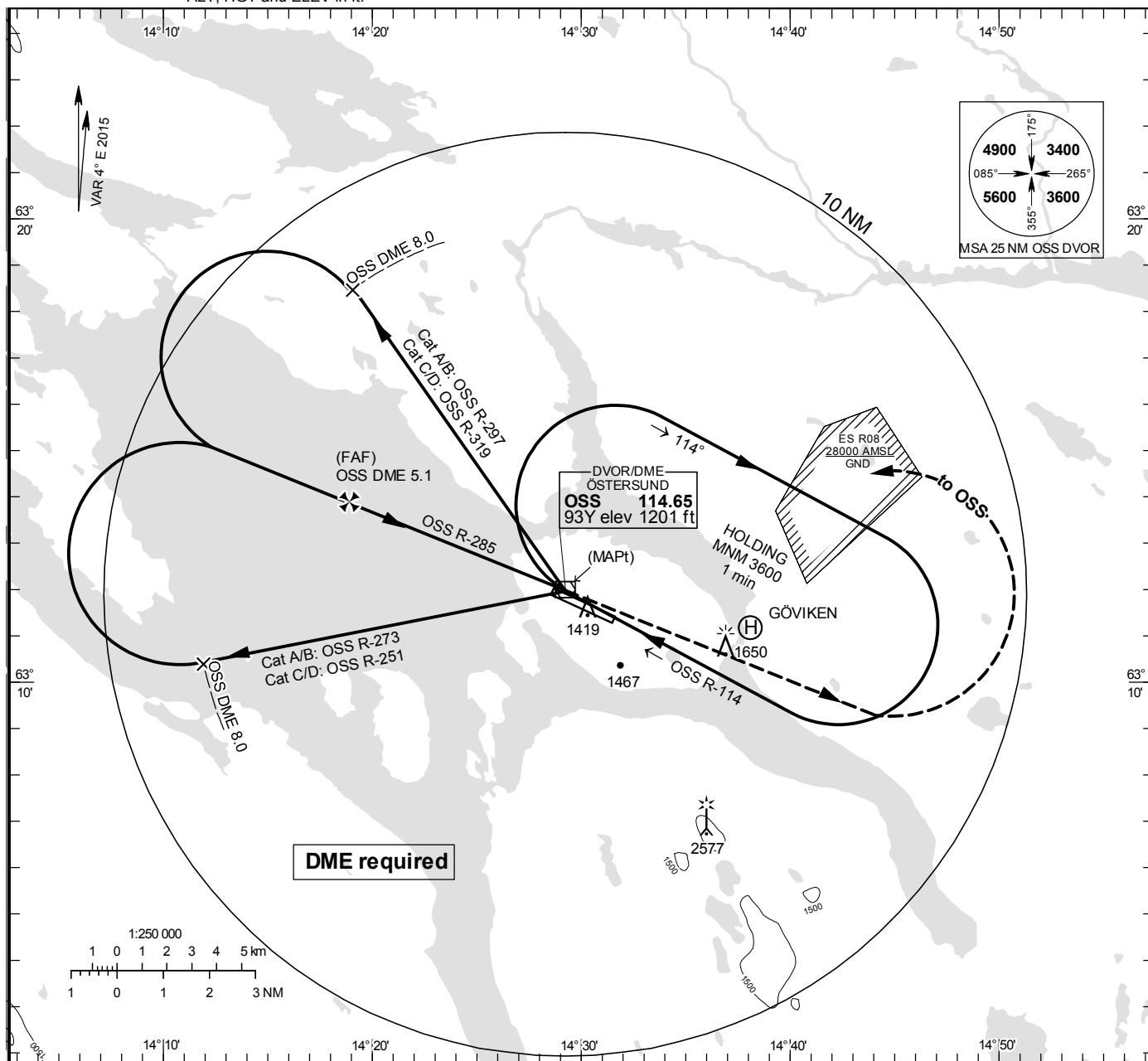
OCH are related to THR.

Circling OCH are related to AD ELEV.

BRG are MAG

ALT, HGT and ELEV in ft.

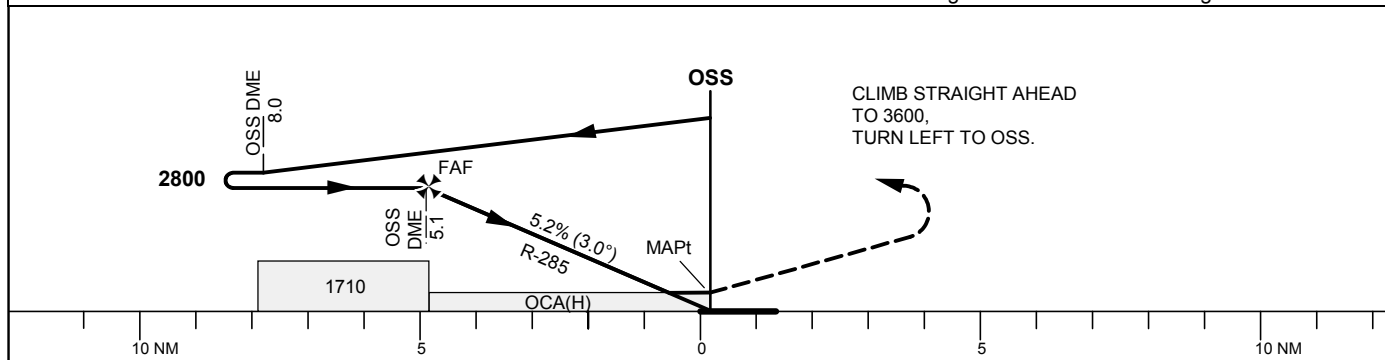
ÖSTERSUND TOWER 135.655



TA 6000 ft AMSL

Final APCH line offset 6°

*Timing not authorized for defining the MAPt



| OCA (H) | | | | | Final approach | | Distance FAF-MAPt 5.1 NM* | | | |
|----------------------|--|--|--|--|-----------------|--------|---------------------------|------|------|------|
| Cat of ACFT | | | | | DME OSS NM | | 5 | 4 | 3 | 2 |
| Straight-in Approach | | | | | ALT | | 2780 | 2460 | 2140 | 1820 |
| | | | | | GS | kt | 80 | 100 | 120 | 140 |
| | | | | | Time | min:s | 3:48 | 3:03 | 2:32 | 2:10 |
| | | | | | Rate of descent | ft/min | 425 | 530 | 635 | 745 |
| Circling | | | | | | | 850 | 850 | 850 | 955 |

CHANGE: Editorial